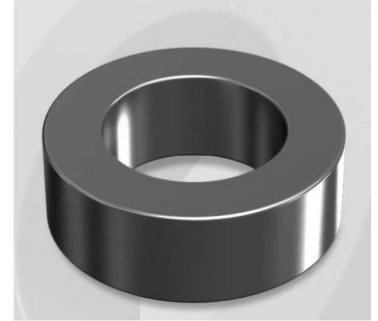


CH270060GTS

Electrical Characteristics

Material	Permeability (μ)	AL \pm 8% (nH/N ²)	DCB (% min) @ 100 Oe	Coreloss (mW/cm ² , max) @50kHz, 1000G
High Flux GTS	60	75	80.08	130

OD : 270G



Core Dimensions

Dimensions		Uncoated (Before)		Coated (After)		Color	Packaging
		(mm)	(inch)	(mm)	(inch)		
OD	(Max)	26.92	1.060	27.70	1.091	Black	Box Qty = 360pcs
ID	(min)	14.73	0.580	14.10	0.555		
HT	(max)	11.18	0.440	11.99	0.472		

Physical Characteristics

Cross Section (A)	Path Length (l)	Window Area (Wa)	Volume (V)	Breakdown Voltage (Vac)
0.654 cm ²	6.35 cm	1.56 cm ²	4.1529 cm ³	1,000
0.10137 in ²	2.500 in	307,874 cmil	0.2534 in ³	

Winding Information

0% Winding length/turn (cm)		
3.758		
40% winding factor Surface Area (cm ²)		
34.42		
40% Wound Di.(mm)		
OD	ID	HT
31.16	9.23	16.16

Typical DC Bias Performance

